

GREAT SANKEY PARISH COUNCIL NEWSLETTER

Summer 2006
Volume 1 Issue 2

The new Parish year sees some changes in the Council

The Annual General Meeting of Great Sankey Parish Council on 10th May 2006 brought about some changes in the Parish Council.

Cllr Allan Bird was voted in unanimously as new Chairman of the Council, and the Council also voted unanimously to elect Cllr Veronica Hudson as Vice Chairman.

Cllr Roy Smith, who has served 2 terms as Chairman, said he was pleased to be able to hand over the Chain of Office to Cllr Bird.

Cllr Bird, on behalf of all the Council, thanked Cllr Smith for his work as Chairman and said he had always been a great ambassador for the Parish.

Cllr Keith Gleave was voted Chairman of the Council Finance Committee, and Cllr Alan Litton was voted Chairman of the Council Employment group.



Cllr Smith hands over to Cllr Bird

Cllr Roy Smith's Chairman's Report for May 2005 to May 2006

During my second year as Chair the Parish council has continued to develop a more open style. This has shown itself in the Council's website being further developed, the issue of the first Parish newsletter, and the reduction of the number of items discussed in closed (Part 2) session of the Council.

The year saw Police Community Support Officers (PCSOs) Colin Cheshire and Natalie Giles taking up their duties. They have dealt with problems of low-level crime and vandalism and parking, particularly during the "school run". Natalie and Colin have become well-known figures in the Parish and I know their contribution has been widely welcomed. We look forward to recruiting further PCSOs to start during the coming year.

The litter awareness project, which started last year, had its climax in an awards ceremony in June at Sankey Valley St James Primary School. Two members of the Warrington Wolves squad helped to distribute the awards, and it was fascinating to see the ingenious ways in which the school pupils had tackled both the issues of litter and their presentations on the night.

Two property issues have taken up a considerable amount of the Council's time. Negotiations with the Borough Council have progressed on the Wroxham Road Centre, although not as fast as we would have liked. At the time of writing we are awaiting a reply from the Borough Council on a few unresolved matters.

The year has seen a considerable refurbishment of the Bewsey Barn Community Centre. The working group who brought this about have now moved on to look at some of the other centres.

During the year the Parish Council gave financial support to a number of local groups. Two, in particular, stand out. First, the Parish Council became the shirt sponsor of Whittle Hall Junior Football Club. Second, we were pleased to be able to support the Our Wood project, both financially and in more practical ways. One or two Councillors donned their wellies and helped with some of the planting. We look forward to the grand opening in June. We also supported financially projects in the three primary schools in the South ward.

Towards the end of the year, after discussions with Inspector Brian Heywood from the Warrington West Neighbour Policing Unit, the Parish Council set up a group to work with the community to explore the youth provision across the Parish. Young people will play a key part in this group.

As Chair I have represented the Parish Council at the Lymm civic service and at their annual dinner and dance and I laid the Parish's wreath at the war memorial on Remembrance Sunday. And finally, the Parish Council decided at its last meeting to start the practice of having the chain of office engraved with the names and dates of office of Chairs, starting with my own.

I would like to thank members for giving me the great honour of chairing this Council. I would also like to thank all the Parish staff for all the hard work they have put in during my term of office.

It's all change at Bewsey Barn Community Centre

Bewsey Barn has had a much-needed refurbishment recently, thanks to Parish Councillors for Whittle Hall ward voting to spend some money on it.

Work started outside with the laying of new paving flags at the back to provide a safer surface there.

Interior work had to be fitted into holiday periods, so as to cause the least possible disruption to the groups using the centre.

To date the interior of the centre has been re-decorated, and the floors renewed, with new carpet tiles in one area and new vinyl flooring elsewhere.

The kitchen and counter snack areas have both been refurbished and new blinds fitted to give a fresher look.

There is still some work to be done on upgrading some of the lights, and renewing fence panels outside and these are programmed in for the Whit holiday.

The Council are also awaiting delivery of new chairs, which are being upholstered in a fabric that will co-ordinate with the new flooring and should give improved stain resistance.

"It's a vast improvement" said Brian Robinson, Secretary of the Indoor Bowls Club which meets at Bewsey Barn every Thursday evening.



A view of the carpeted area and the snack counter at Bewsey Barn

Parish Budget for April 2006 to 2007

General Income	2006/07
Precept	£142,885.00
Centre hire	£39,000.00
Interest	£15,000.00
VAT refund	£10,000.00
Total Income	£206,885.00

In the last Newsletter the Parish Budget for 2006/07 was printed, but unfortunately it was an early draft and not the final version as agreed by the Council.

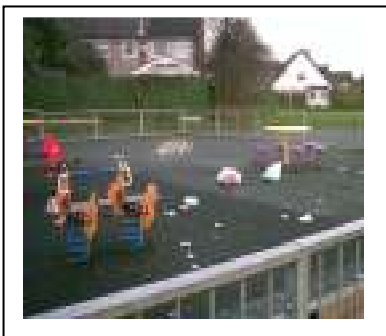
The income from VAT refunds and interest had been underestimated in the early version. Councillors put the extra income they found to good use by allocating it towards refurbishing the Parish Community Centres over the coming year.

General Expenditure	2006/07
Wages	£75,000.00
Insurance	£7,500.00
Subscriptions	£1,100.00
Loan repayment	£11,000.00
Gen administration costs	£4,500.00
Centre upkeep	£25,000.00
Utilities	£27,700.00
Newsletter	£3,150.00
Training	£1,000.00
Donations (including under S137)	£6,000.00
Litter scheme	£2,000.00
Community Support Officers	£42,000.00
Playscheme	£3,000.00
Miscellaneous	£10,000.00
Community centre heating review	£20,000.00
Community Centre refurbishment	£20,000.00
Whittle Hall flagging	£1,000.00
Cemetery maintenance	£700.00
Office computer	£1,000.00
Total Expenditure	£261,650.00
Deficit (to be taken from reserves)	£54,765.00

And the best news of all is that the reduction in the Parish Precept agreed by the Council still stands. This is the correct version

Council report for April 2005 to April 2006

- The Parish Council continued to operate 5 community centres which provide the venues for a variety of clubs, lessons, activities and services for the Parish.
- A Parish Council website was set up early in 2005
- In May the Parish Council donated money to help with the re-surfacing of the play area at Thurston Close.
- In May the Parish Council arranged for a training course for Councillors to be run in Great Sankey, which Councillors from other Parishes also attended
- In June the Parish Council organised an awards ceremony for the Litter Awareness Project which they had begun in local schools the previous September
- Also in June the Parish Council matched funding with WBC to resurface the car park at Wroxham Road
- In July the Parish Council gave a donation of £4500 to the "Our Wood" project and helped them obtain further funding from the Environmental Improvement Fund
- In August the Parish Council provided matched funding with Arena Housing Association for a "Skip Day" around Lander Close, Ross Close, Gregory Close and Cavendish Close
- In October the Parish Council gave donations to 3 local schools for various projects.
- The Parish Council assisted the Dorchester Road Residents Association to get established with free or reduced hall hire for a limited period
- The Council also gave a grant to Old Hall Community Group to help provide materials for a litter picking campaign
- The Parish Council sponsored a football strip for Whittle Hall Junior Football Club under-14s team
- The Parish Council made a donation to fund bike gear for the Police Community Support Officers, to help them respond more quickly
- The Council gave a grant to WBC to help fund summer playschemes at 4 community centres
- The Parish Council initiated another, slightly different Litter Awareness scheme in September 2005.
- In March the Parish Council voted to increase the number of Police Community Support Officers it helps to fund, and negotiations are currently going on with the Police about this.



Litter at the Tim Parry Play area

In addition to routine maintenance the Parish Council had to spend a lot of money and effort over the year making good vandal damage to fences, lights, play equipment and bins at the Tim Parry recreation ground and cleaning up litter and broken glass. There has also been vandal damage at other centres

The Parish Council has started a programme of refurbishment at the Community Centres. In Autumn they paid to resurface the netball and 5 a side courts at Tim Parry Community Centre; replaced the old curtains with new blinds in the main hall; replaced the central heating boiler and upgraded the lighting there.



The refurbished snack area at Bewsey Barn – see page 2

The Parish Council have also taken other actions which did not involve obtaining funds.

- In June they reviewed and changed their insurance provider in order to get better value for money.
- In July the Council reached agreement with WBC about reassigning the lease for Wroxham Road centre.
- They reviewed many planning applications and sent objections or notes of concern to WBC about 6 of them.
- The Parish Council liaised with Northern Rail about improvements to Sankey Station
- The Parish Council tried to get Alcohol-free Zones set up in Great Sankey. This was not successful, but the Council have not given up and are gathering information for another attempt at this.
- The Parish Council reduced the precept for the second year running.

Where the money went in 2005/06

General Income

Precept	£149,258.00
Centres	£38,294.48
Interest	£10,292.57
VAT	£9,982.14
refunds	£1,397.81
Miscellaneous	£180.00
total income	£209,405.00



General Expenditure

Wages	£72,311.89
Insurance	£6,221.34
Subscriptions	£2,057.21
Project fund	£22,904.60
Loan repayment	£10,830.00
Gen admin	£6,038.53
Centre upkeep	£32,527.15
Utilities	£23,934.89
Newsletter	£1,299.68
Training	£255.00
Donations	£5,882.28
Donations under S137	£948.03
Litter scheme	£2,280.00
CSO's	£40,000.00
Playscheme	£2,800.00
Miscellaneous	£2,155.32
total expenditure	£232,445.92
Deficit (from surplus in previous years)	£23,040.92

Getting in touch with the Parish Council

Council meetings

Members of the public are most welcome to attend Parish Council meetings and to ask questions of Council members.

Meetings are held every month (except August) in the Tim Parry Community Centre, Cromdale Way. Meetings start at 7.30pm on the second Wednesday in the month.

There is often a report from the Police Community Action Team at the start of the meeting, and then there is a time during which the Council take questions from the public.

Dates for the Parish Council meetings in the next few months are, 12th July 2006, 13th September 2006, 11th October 2006.

Alternatively you can go along to surgeries held by Councillors

Councillors Surgeries

For Whittle Hall

2nd Saturday in the month at Westbrook Library 11am to 12noon

For Sankey South

1st Saturday in the month at the Library, Marina Avenue 10.30am to 11.30am

For Sankey North

1st Saturday in the month at Tim Parry Community Centre 10.30am to 11.30am

Contact numbers for Great Sankey Parish Councillors

(all begin 01925)

Sankey North

Keith Gleave	727963
Veronica Hudson	723374
Roy Smith	654950
Judith Wheeler	655621
Peter Ryan	724512

Sankey South

Alan Litton	453264
Doreen Lynn	493746
Jim Regan	650057
Liz Smith	654950

Whittle Hall

Allan Bird	659439
Peter Carey	726008
Terry Lewis	630020
Lorna Lewis	630020
Tony Williams	725427

You can also contact the Parish Clerk, Cheryl Wakefield, at the Parish Office. This is located in Whittle Hall Community Centre and is open from 9.30am to 1.30pm every weekday. An answerphone operates outside these hours.

Whittle Hall Community Centre

Lonsdale Close

Warrington

WA5 3UA

tel 01925 712279